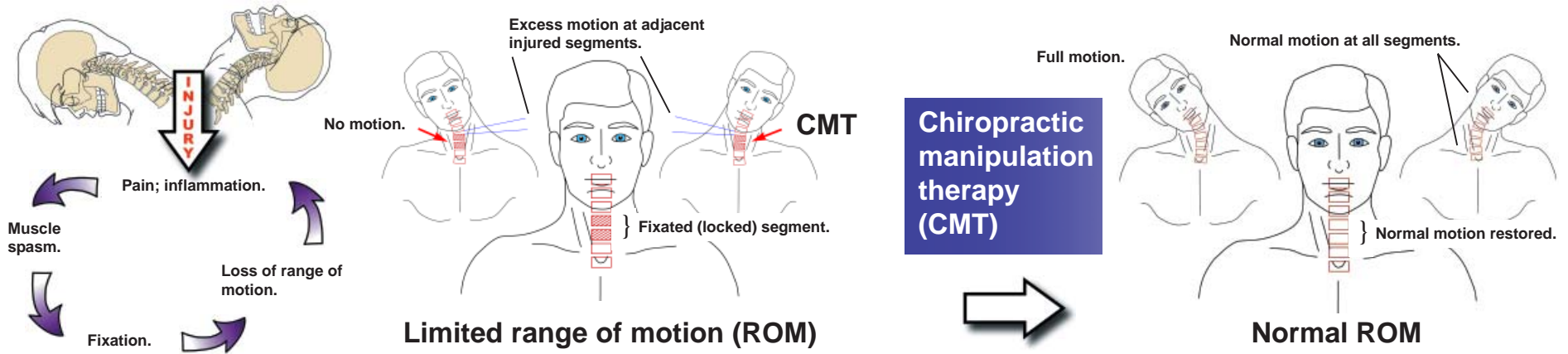
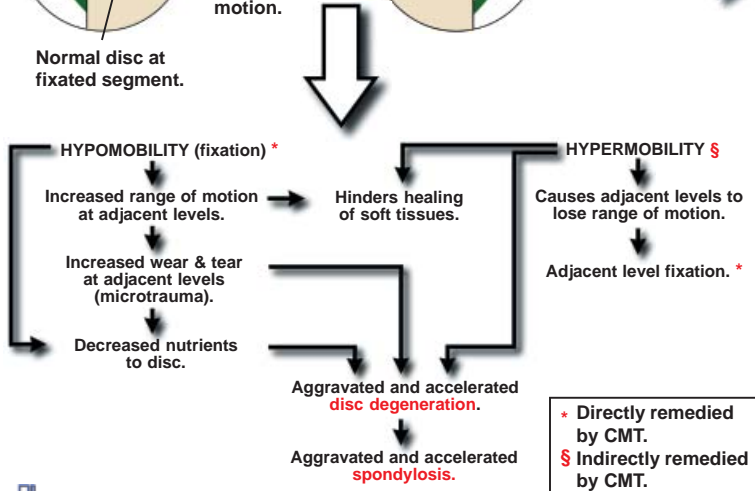
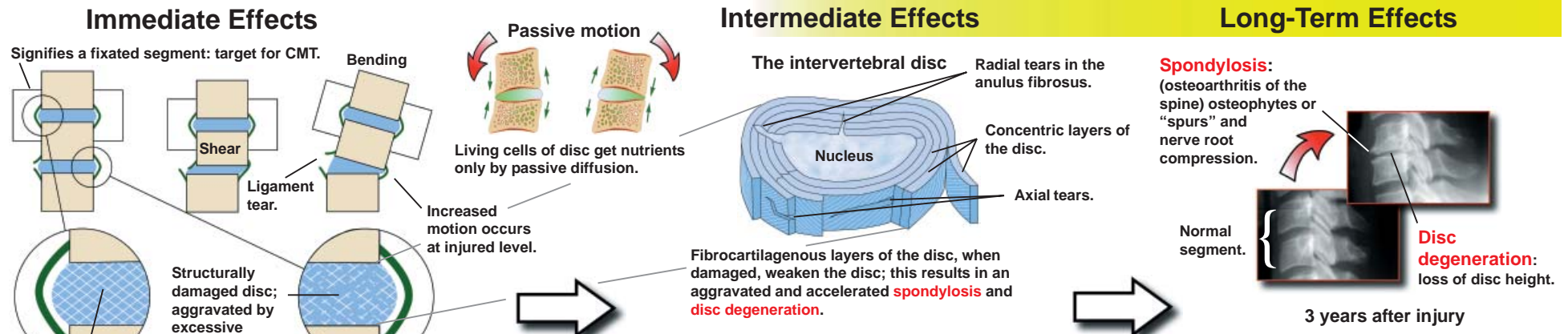


Why Chiropractic Treatment?



Consequences of no CMT:



Treatment (TX) Guidelines for Chiropractic Care*

Grade	Description	TX Duration	TX Number
Grade 1	Minimal injury; no limitation of ROM, no neurological symptoms.	< 10 weeks	< 21
Grade 2	Slight injury; limitation of ROM, no neurological symptoms (findings).	< 29 weeks	< 33
Grade 3	Moderate injury; limitation of ROM, some ligamentous injury, neurological symptoms (findings).	< 56 weeks	< 76
Grade 4	Moderate to severe injury; as above plus ligamentous instability, and fracture or disc injury.	May require lifetime care.	May require lifetime care.
Grade 5	Severe injury; requires surgery.	Post-surgical.	Post-surgical.

Potentially Complicating Factors
Advanced age
Metabolic disorders
Congenital anomalies of the spine
Developmental anomalies of the spine
Degenerative disc disease
Disc protrusion/herniation
Spondylosis and/or facet arthrosis
Arthritis of the spine
AS or other spondylarthropathy
Prior cervical or lumbar spine surgery
Prior vertebral fracture
Osteoporosis or bone disease
Spinal or foraminal stenosis
Paraplegia/tetraplegia
Prior spinal injury; scoliosis

* TX numbers and durations may need extending if complicating factors are present. In some cases, lifetime care will be required.